

WELCOME

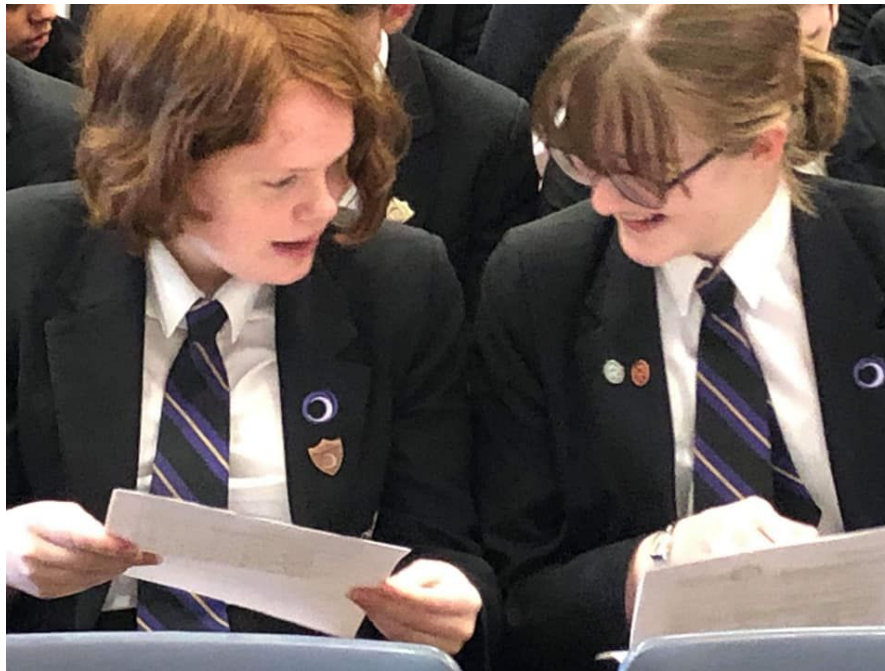
Year 6 Transition Evening

10 July 2023

Confidential - do not duplicate or distribute without the written permission of OGAT

Students First: raising standards and transforming lives

On a journey to become world class...



Confidential - do not duplicate or distribute without the written permission of OGAT

What is our purpose?

- To raise standards for **all** students: high academic achievement, critical workplace skills - hard work, resilience, positivity, and teamwork.
- To ensure our young people have high aspirations for their future
- To instil a genuine drive to ‘make a difference’
- To be the kind of people we’d all want to work with, and be the kind of friends who help us learn from our occasional mistakes.



Confidential - do not duplicate or distribute without the written permission of OGAT

Standards Partnership

Confidential - do not duplicate or distribute without the written permission of OGAT

Students First: raising standards and transforming lives

The Outwood Pyramid



© Outwood Grange Academies Trust. All rights reserved. Written permission of OGAT

Be safe
Be responsible
Be respectful



Warm - Strict

Confidential - do not duplicate or distribute without the written permission of OGAT

What does it mean to be safe in the academy?

Outwood Safety **CHOICES**:

C

Concerns should be reported to an adult immediately

H

Help others when they need it

O

Offer support to others

I

Instructions from adults should be followed immediately, at all times

C

Careful and sensible movement around the building

E

Ensure that you always keep yourself and others free from danger

S

Stay in permitted areas only

What does it mean to be responsible in the academy?

Outwood basics for learning

A B C D E F

A

Accept that your actions are your choice

B

Be on time, every time

C

Come to school fully equipped for learning

D

Do all classwork and homework to the best of your ability

E

Ensure that you keep hands, feet and unkind words to yourself

F

Follow all instructions, first time

What does it mean to be respectful in the academy?

Be phenomenal and remember...

S Smile

P Please

E Excuse Me

T Thank you

S Sir or Miss

What does it mean to be respectful in the academy?



S **T** **A** **R**

- Sit up and listen carefully**
- Track the teacher**
- Ask and answer questions**
- Respect others**



Students First
OUTWOOD
GRANGE ACADEMIES TRUST

of OGAT



ACE
PROGRAMME



**Academy
Conduct and
Expectations**

Confidential - do not duplicate or distribute without the written permission of OGAT

What Uniform Do We Provide?

- **Blazer**
- **Tie**
- **Shirt x 2**
- **One pair of trousers or a skirt**
- **Outwood polo shirt**
- **Outwood rugby top**
- **Black shorts**
- **Black sports socks**

Additional items can be ordered from the Trutex website.

Confidential - do not duplicate or distribute without the written permission of OGAT



Items You Will Need to Buy

Uniform:

- Plain black socks (if wearing trousers) or plain black tights (minimum of 40 denier) if wearing a skirt
- Black school shoes (please see the uniform policy)
- Non-marking trainers for PE
- Any spare uniform or optional items from the uniform policy.

School Equipment:

- School bag
- Black and red pens, a pencil, a ruler and a rubber
- Scientific calculator
- School geometry set
- An English dictionary

Confidential - do not duplicate or distribute without the written permission of OGAT

Uniform Events

- **Collection Event:**
Wednesday 5 July **3.30 - 6.30pm**
- **Exchange:**
Wednesday 12 July **3.00 - 7.30pm**

Confidential - do not duplicate or distribute without the written permission of OGAT

School Meals

**Cashless
iPay
FSM**



From September a school meal costs: £3.28

- **Please note students need to bring in snacks for break time for the rest of the week. Students had a free taster today.**

Confidential - do not duplicate or distribute without the written permission of OGAT

Introducing ...

Mr McGreal Principal Designate

Confidential - do not duplicate or distribute without the written permission of OGAT

Introducing ...

Miss Peacock
Assistant Principal
Deep Learning

g.peacock@bydales.outwood.com

Confidential - do not duplicate or distribute without the written permission of OGAT



What does learning look like at Bydales?

The Key Ingredients:

Teacher Toolkit
(timers, random name generator etc)

Bell Tasks

Knowledge Rich Curriculum

Live Marking

Collaborative Learning Structures

Scholarly Praise

Consequences system

Modelling Answers

High Expectations

Seating Plans

Mini Whiteboard-
Assessment For Learning

Plenary - Sums up the learning

Confidential - do not duplicate or distribute without the written permission of OGAT

Praise Culture

To promote fantastic learning environment and community we have a wide range of rewards at Bydales.

- Postcards
- Praise points
- Certificates
 - Bronze Award 100 points
 - Silver Award 200 points
 - Gold Award 300 points (Gold Star pin)
 - Platinum Award 400 points (platinum pin)
- Books!



Confidential - do not duplicate or distribute without the written permission of OGAT

Praise Culture

Each half term, teachers are asked to give students effort grades:

E1 - Star Students

E2 - Promising Students

E3 - Hard Working Students

E4 - Wake-Up Call

Students with multiple E1's on their reports are invited to Juice and Cookies with the Principal.

Confidential - do not duplicate or distribute without the written permission of OGAT



Introducing ...

Mr Roberts
Associate Vice Principal
Deep Support

b.roberts@bydales.outwood.com

Confidential - do not duplicate or distribute without the written permission of OGAT

Deep Support

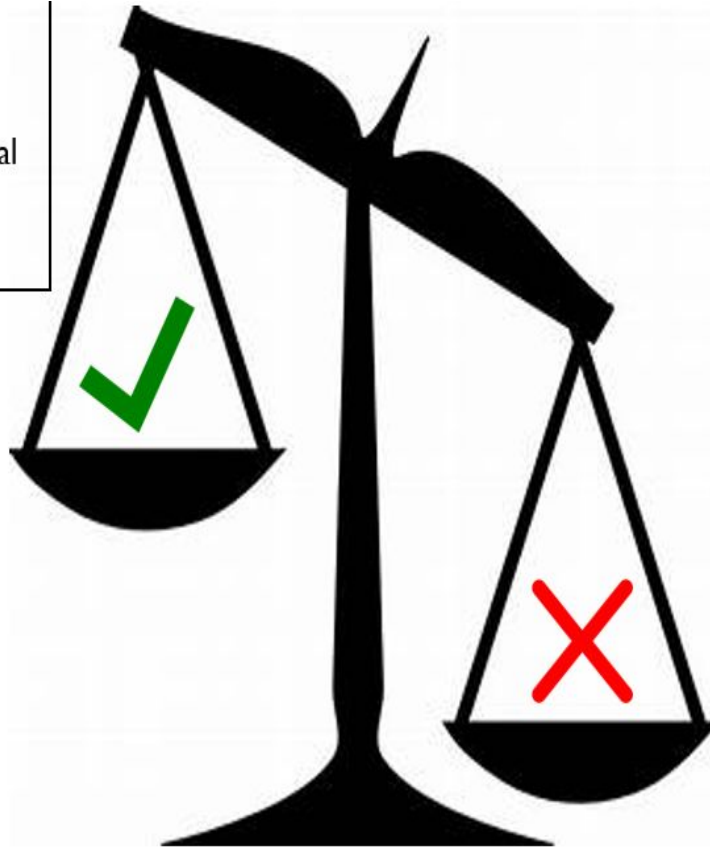
- Behaviour and Attendance
- Praise points and the consequence system
- Praising Stars
- Safeguarding
- Mental Health and wellbeing

Confidential - do not duplicate or distribute without the written permission of OGAT

Behaviour System

Praise

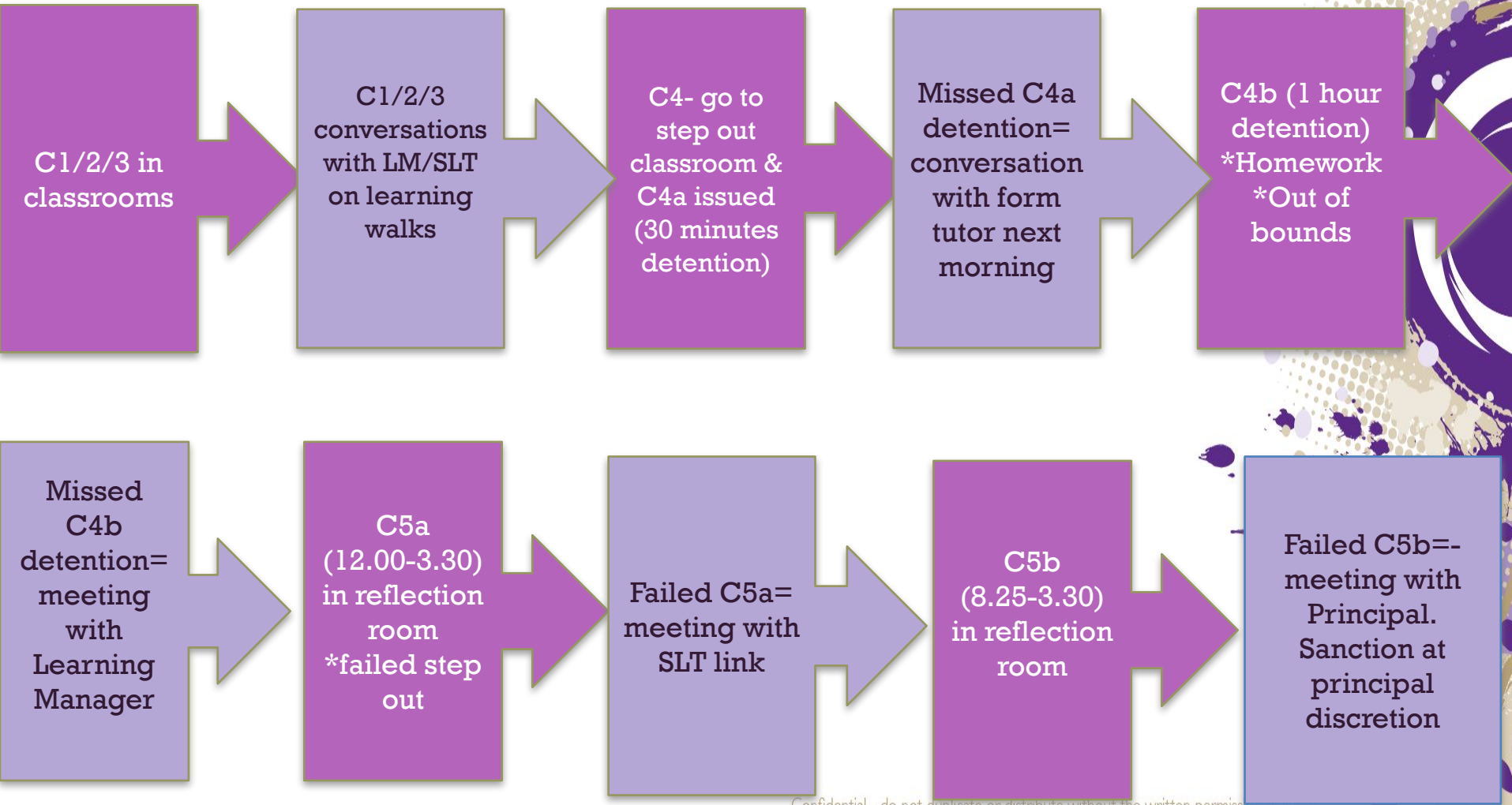
Praise points, praise boards, e-postcards, student of the week, praise call home, social media celebration, gift vouchers, juice and cookies



Consequence

C1-C3, C4a, HTG meeting, C4b, VP/SLT Link meeting, C4c, Parental meeting, FTE, Principal meeting

Confidential - do not duplicate or distribute without the written permission of OGAT



Confidential - do not duplicate or distribute without the written permission of CGAT



Confidential - do not duplicate or distribute without the written permission of OGAT



Student uniform

- Plain black shoes (must be polishable) – no trainers, boots, pumps or canvas shoes will be allowed
- Socks - they must be plain black
- Jewellery - No jewellery is allowed except a wrist watch and a Medic Alert necklace or bracelet. Smart watches are not allowed in the Academy. Please check for rings and ear piercings
- Bag - all students need a bag that can fit in a planner and an A4 workbook
- Nail polish and any type of false nails (including clear gels, acrylics, extensions, Shellac etc) are not allowed.
- Hair bobbles need to be purple or black, and should be discrete

Confidential - do not duplicate or distribute without the written permission of OGAT

Student uniform



Confidential - do not duplicate or distribute without the written permission of OGAT

Students First: raising standards and transforming lives

Praising Stars

Age Related Expectations		
Target from KS2	Current	Difference

You will receive up to five praising stars reports across the academic year depending on the year group your child is in.

Year 7 will receive 3 Praising Stars reports and these will include information on:

Attendance and Behaviour. You are provided with a record of your child’s attendance and any concerns raised by our behaviour system.

Age Related Expectations (see key describing age related expectations on the report) is reported for Years 7 and 8. Teachers will enter a current working level for each subject – which is compared against the target level for that subject.

The target is generated from Key Stage 2 SATs’ scores and calculated to add a degree of challenge which is highly aspirational. Targets may also be adjusted, throughout the years to best reflect your child’s ability.

Effort (E1-E6). Parents/Carers should view the effort grades first and foremost as a measure of your child’s performance towards meeting/exceeding target grades. This will provide a clear indication of the work ethic in particular lessons.

E1 Star Student	E2 Promising Student	E3 Hard Working Student	E4 Wake-up Call	E5 Negative Attitude	E6 Extremely Negative
--------------------------------	-------------------------------------	--	--------------------------------	-------------------------------------	--------------------------------------

Homework – Where highlighted this shows that the teacher is raising a homework concern.

Attendance – Where highlighted this raises a concern for your sons/daughters attendance in lessons and the negative effect this is having on their performance and progress.

Confidential - do not duplicate or distribute without the written permission of OGAT

Safeguarding Team

Designated Safeguarding Leads (DSLs)



Mr Roberts
Associate Vice Principal



Mr Clayton
Assistant Principal



Mr Page
Inclusion Coordinator

Confidential - do not duplicate or distribute without the written permission of OGAT

Safeguarding Team

Deputy Designated Safeguarding Leads (DDSLs)



Miss Bennett-Bade
Learning Manager



Mrs Boyes
Learning Manager

Miss Lawn
Learning Manager

***If you have a problem, however big or small there is always someone you can talk to.
Remember you can speak to any member of staff at any time.***

Introducing ...

Mr Clayton
Assistant Principal
Deep Support

s.clayton@bydales.outwood.com

Confidential - do not duplicate or distribute without the written permission of OGAT

Mental Health and Wellbeing Leaders

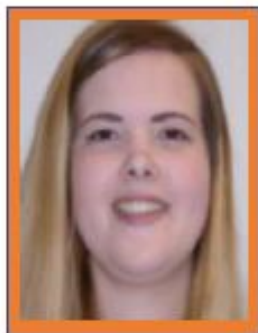


Mr Clayton



Mrs Hudson

Mental Health and Wellbeing Staff Ambassadors



Miss Firth



Mr Beacham




Miss Pressley

Confidential - do not duplicate or distribute without the written permission of OGAT


<https://mentalhealth.bydales.outwood.com/home>

MHWB Resource site Home MHWB Team Parent/carer support Upcoming events Coping with Exam Stress Mindfulness and Wellbeing



What is Mental Health?

Let's get the basics sorted.



ANXIETY

What is Anxiety?

Anxiety is one of the most common mental illnesses... but what is it?

Confidential - do not duplicate or distribute without the written permission of OGAT

Bydales is an inclusive school

“The inclusive curriculum at Outwood Academy Bydales “celebrates diversity and promotes tolerance and mutual respect of others.”

Through the Tutor Programme, Life Lessons and across all subject areas, the “curriculum provision supports students’ personal growth and promotes fundamental British Values; social, moral, spiritual, and cultural awareness; personal, social and health education and relationship and sex education.”



- Improves pupil and staff self-confidence, resilience and mental health
- Improves pupil outcomes
- Creates a culture of awareness of mental health, tolerance and acceptance, helping to reduce behavioural problems and promotes positive mental health strategies
- Increases staff retention rates and attracts high calibre staff
- Demonstrates commitment to adhere to professional and government guidance



Minds
Ahead

Confidential - do not duplicate or distribute without the written permission of OGAT

Attendance

Attendance of students in secondary school since the pandemic has dropped significantly.

Hybrid/remote learning is not as effective as quality first teaching.

Teachers at Bydales are experts in their respective fields.

‘Watching’ something is simply not the same as actively engaging in a lesson!

Being in school is not just about the academic benefits.

Confidential - do not duplicate or distribute without the written permission of OGAT



Attendance

ATTENDANCE MATTERS

Did you know?

Attendance impacts on achievement
A student with 5 Grades 9-4 is likely to earn £150+ per week more than someone with only 1
Employers want a workforce which punctual and fully committed

90%

PERSISTENTLY

If you have 90% attendance each academic year, by Y11 you will have missed 6 months of learning!

94%

COULD BE BETTER

This is the equivalent of ½ a day of absence every 2 weeks

97%

VERY GOOD

Hitting Academy Target

100%

EXCEPTIONAL

Confidential - do not duplicate or distribute without the written permission of OGAT

Attendance

What do we expect from our parents/carers?

To ensure their child attends the academy, dressed in full uniform and fully equipped to learn.

To ensure their child arrives to school on time - *Lessons begin promptly at 8:25am.*

To avoid keeping their child away from the academy for any reason other than illness or other potentially authorised explanations.

It is important to note that it is at the schools discretion whether an absence is authorised - you may be asked to provide supporting medical evidence.

To avoid arranging holidays during term time.

To immediately inform the academy Attendance Office / Academy if their child is unable to attend (by 8.25am where possible), including the reason for absence and expected date of return.

Parents/carers should contact the academy on **each day** of absence.

Introducing ...

Miss Ferris
Vice Principal
Deep Experience

j.ferris@bydales.outwood.com

Confidential - do not duplicate or distribute without the written permission of OGAT



Deep Experience

Curriculum

Confidential - do not duplicate or distribute without the written permission of OGAT

Students First: raising standards and transforming lives



Deep Experience

Curriculum

Timetable and sets

	1Mon	1Tue	1Wed	1Thu	1Fri
1	Maths SCL 118	Science ALA 217	PE DMD 224	Spanish ERO 204	English RRO 207
2	English RRO 207	Comp Scienc GPE 221	English RRO 207	Maths SCL 110	Music STR 203
TG	Tutor Group MLE 118	Tutor Group MLE 118	Tutor Group MLE 118	Tutor Group MLE 118	Tutor Group MLE 118
3	Science ALA 217	Art KSM 120	Maths DCH 111	Life/Re MDO 206	Spanish ERO 204
4	Geography JDE 109	English HTO 200	Geography JDE 109	History AHU 116	DT AMC 117
5	History AHU 116	French CWA 212	Drama CPR 101	Science ALA 217	Maths SCL 110
E					

AHU: Mr A Hutchinson
ALA: Mrs A Lawler
AMC: Mrs A McNally
CPR: Miss C Pressley
CWA: Mrs C L Waites
DCH: Mrs D Charlton

HTO: Mrs H Townsend
JDE: Mr J Denny
KSM: Mrs K L Smith
MDO: Mr M Dowle
MLE: Miss M Lees
RRO: Miss R Robinson

Confidential - do not duplicate or distribute without the written permission of OGAT

Deep Experience

Curriculum
Timetable and sets
Praising Stars

Year 7 Praising Stars Report
2018/2019 - Praising Stars 0

	Attendance for PSE	Attendance for Peer	Behaviour Record for Year	
Present	100%	100%	CA	0
Absent/Authorised Absence (Days)	0	0	CB	0
Unauthorised Absence (Days)	0	0	CS	0
Late	0	0	Fixed Term Exclusions	0

A Guide to Age Related Expectations

Level	Description	Expected GCSE outcome if this working level is maintained
Exceeding	You are working well above age related expectation in the subject	GCSE grade 9 to 8
Exceeding	You are working beyond age related expectation in the subject	GCSE grade 8 to 7
Exceeding	You are working at age related expectation in the subject	GCSE grade 7 to 6
Exceeding	You are working towards age related expectation in the subject	GCSE grade 6 to 5
Exceeding	You are working below age related expectation in the subject	GCSE grade 5 to 4

Subject/Teacher(s)	GCSE Target	Age Related Expectations				Progress		EBot	Homework Completed	Att. / Absences
		Target from PSE	Current	Difference	PI 14	From PSE				
Art and Design & Design	7	Exceeding	Adopting	-	██████████	██████████	██████████	██████████	██████████	██████████
Computer Science & Design	7	Exceeding	Exceeding	+	██████████	██████████	██████████	██████████	██████████	██████████
Design and Technology & Cook and a Dish	7	Exceeding	Adopting	-	██████████	██████████	██████████	██████████	██████████	██████████
German & Spanish	7	Exceeding	Adopting	-	██████████	██████████	██████████	██████████	██████████	██████████
English & Creative and Design	7	Exceeding	Exceeding	+	██████████	██████████	██████████	██████████	██████████	██████████
French & Design	7	Exceeding	Exceeding	+	██████████	██████████	██████████	██████████	██████████	██████████
Geography & Science	7	Exceeding	Exceeding	+	██████████	██████████	██████████	██████████	██████████	██████████
History & Design	7	Exceeding	Adopting	-	██████████	██████████	██████████	██████████	██████████	██████████
LIFE & Science	10	10	10	10	██████████	██████████	██████████	██████████	██████████	██████████
Mathematics & Physics and a Project	7	Exceeding	Adopting	-	██████████	██████████	██████████	██████████	██████████	██████████
Music & Design	7	Exceeding	Adopting	-	██████████	██████████	██████████	██████████	██████████	██████████
Physical Education & Design	7	Exceeding	Adopting	-	██████████	██████████	██████████	██████████	██████████	██████████
Science & Physics and a Project	7	Exceeding	Adopting	-	██████████	██████████	██████████	██████████	██████████	██████████
Y6 & Design	10	10	10	10	██████████	██████████	██████████	██████████	██████████	██████████

Confidential - do not duplicate or distribute without the written permission of OGAT

Deep Experience

Curriculum – 5 years

Timetable and sets

Praising Stars

Tutor Groups (and intervention)

Enrichment

Careers

Student Voice



Confidential - do not duplicate or distribute without the written permission of OGAT

Tutor Group Weekly Overview

	SLT Link	Monday	Tuesday	Wednesday	Thursday	Friday
Oceania	Miss Ferris	Admin/Notices	Assembly	Numeracy	Project	Literacy & Acc Reader
Africa	Mr Roberts	Admin/Notices	Project	Assembly	Literacy & Acc Reader	Numeracy
Asia	Miss Peacock	Admin/Notices	Numeracy	Literacy & Acc Reader	Assembly	Project
Americas	Mr Clayton	Admin/Notices	Literacy & Acc Reader	Project	Numeracy	Assembly

Assemblies – Continent Assemblies: Fairtrade
Literacy – Accelerated Reader/Spellings
Project – Fairtrade
Numeracy – Cell Block

Confidential - do not duplicate or distribute without the written permission of OGAT

Other key staff

Mrs Boyes

(Year 7 Learning Manager)

h.boyes@bydales.outwood.com



Mrs Robinson

(SENDCo)

r.robinson@bydales.outwood.com



Mr Page

(Inclusion Coordinator)

a.page@bydales.outwood.com



Confidential - do not duplicate or distribute without the written permission of OGAT

How can you help? a bit about traffic...



Confidential - do not duplicate or distribute without the written permission of OGA

Churchill Drive...



Churchill Drive is a 'no entry' road except for Access.

Please can you help us maintain our strong community relationships by not using it when collecting students?

Confidential - do not duplicate or distribute without the written permission of OGAT

It is a narrow road, especially for the hundreds of students and cyclists who use it before and after school...



Confidential - do not duplicate or distribute without the written permission of OGAT

Please don't use the turning circle - the cones are a clue!
Please be patient and use the parking spots...



Confidential - do not duplicate or distribute without the written permission of OGAT

Please don't park on the double yellow lines...
This area is critical for students crossing safely.



Confidential - do not duplicate or distribute without the written permission of OGAT

Please don't use this private road and cycle path for parking or to do u-turns.



Confidential - do not duplicate or distribute without the written permission of OGAT

This junction is not for student pedestrians!



Use this gate
for the Coast
Road access...

At no point should
pedestrians be here.
Dangerous
behaviour= C4b

Or this one for
Marske...

Confidential - do not duplicate or distribute without the written permission of OGAT

Chair of Local Academy Council (Governors) Tricia Taylor

Fox, Joshua

Groves, Harry





It's about standards

Students First: raising standards and transforming lives



It's about life-chances



Confidential - do not duplicate or distribute without the written permission of OCAT

It's about 'no excuses'

Students first, raising standards and transforming lives

It's about putting Students First
Raising Standards, Transforming Lives

